
Commodore Color Plotter

Technical Manual

Model 1520



commodore
COMPUTER

These documents are for repair service information only. Part numbers are for reference only. Only parts on current dealer parts list are available. No license is given for any use by possession of these documents and may not be reproduced in any form without the written approval of Commodore Electronics Limited.

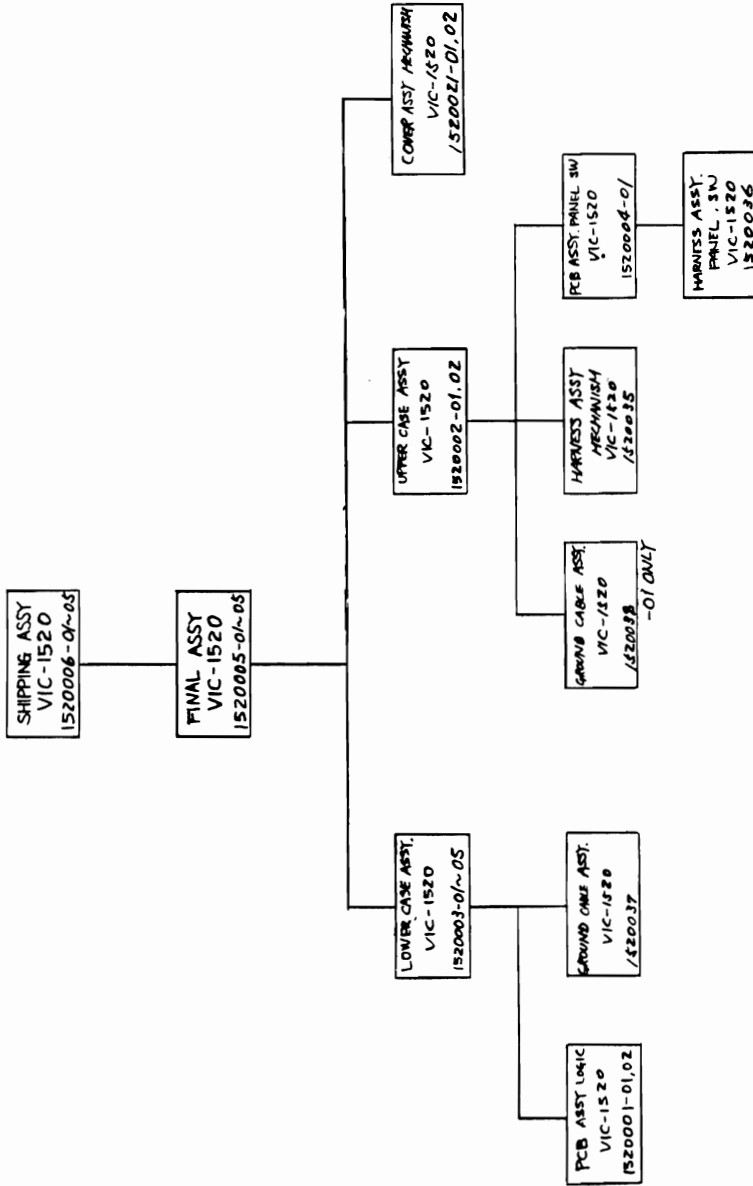
PART NO.	DESCRIPTION	REV. NO.	DATE	DESCRIPTION	REV. NO.	DATE
1520001-01	PCB ASSY. LOGIC VIC-1520 FCC					
		A	10/1/82	PRODUCTION RELEASE	7.7	1-7
		B		ADDED ITEM 104 FOR DASH 01	7.7	
		C		CORRECTED ERROR ON ITEM 48.	7.7	
		D	1/26/83	REV PER ECO 830022	1/26	N.M.
		E	2/11/83	REV PER ECO 830064	1/26	N.M.
		F	3/8/83	REVISED PER ECO 830122		1/26

1. SHEET 5, 6 OF 6 ARE B-SIZE
 ASSY DWG.
 NOTES.

c b m ENGINEERING OSAKA JAPAN	TITLE: PCB ASSY. LOGIC VIC-1520	DRAWN BY: T. T. K. U. O. G.	DATE	DATE	DATE	SIZE	SHEET
			9/1/82	1/1	1/1		
		CHKD:	1/1	APPR: A. T. K. U. O. G.	9/30/82		

REVISIONS

LTR	ZONE	DESCRIPTION	DATE	APPROVED
A		PRODUCTION RELEASE	9/1/82	RT



UNLESS OTHERWISE SPECIFIED TOLERANCES ON:		DRAWN BY:	DATE
.X	.XX	K. M. Malyukina	9/5/82
.XX	.XXX	CHKD: T. Tokuda	9/16/82
±	±	ENGR:	
±	±	APPR: P. Tolstee	9/29/82
MATERIAL:		USED ON	NEXT ASSY
		VIC-1520	
FINISH:			
commodore			
DRAWING TREE VIC-1520			
SIZE	SCALE	REV	OF
B	1520032	B	1
SHEET		1 OF 1	

ITEM	QTY REQD PER PART/DASH NO.	U Q	PART NUMBER	DESCRIPTION	REF. DES	BEND	NOTES
1		B	1520007	P.C. BOARD 120 x 105 x 1.6t			PAPER PHENDLYC
2							
3							
4		B	1520009	SCHEMATIC DIAGRAM			
5							
6							
7							
8							
9							
10		B	325340-01	IC MPS 6500/1 CPU	U1		MDS
11		B	901522-06	7406 INV. OC	U2		
12		B	901521-30	74LS14 SCH. INV	U3		
13		B	325556-01	IC LB1257 DRIVER	U4		SANTO
14							
15							
16							
17							
18		B	902671	TRANSISTOR NPN 2SC945	Q8		NEC
19		B	325555-01	2SD187	Q4, Q5		HITACHI SUBSTITUTION FOR ITEM 20
20		B	325555-02	2SD788	Q4, Q5		HITACHI
21		B	325555-03	NPN 2SD1246	Q4, Q5		SANTO SUBSTITUTION FOR ITEM 20
22							
23		B	902717	PNP 2SA733	Q1-Q3		NEC
24		B	325554-01	2SB738	Q6, Q7		HITACHI SUBSTITUTION FOR ITEM 25
25		B	325554-02	2SB739	Q6, Q7		HITACHI
26		B	325554-03	TRANSISTOR PNP 2SB926	Q6, Q7		SANTO SUBSTITUTION FOR ITEM 25
27		B	325567-01	TRANSISTOR PNP 2SB772	Q4		NEC
28							
29		B	900750-02	DIODE SIGNAL IN4002	CR3-CR6		
30		B	900850-05	SIGNAL WGT13C	CR2, 8		
31		B	900967-01	ZENER 7.5V 500mW ±5%	CR7		
32		B	900756-01	DIODE BRIDGE 1.5A/50V	CR1		KBP-005
33		B	900850-06	DIODE SIGNAL 1S2472	CR2, 8		SUBSTITUTE FOR ITEM 30.
34							
35							
36							

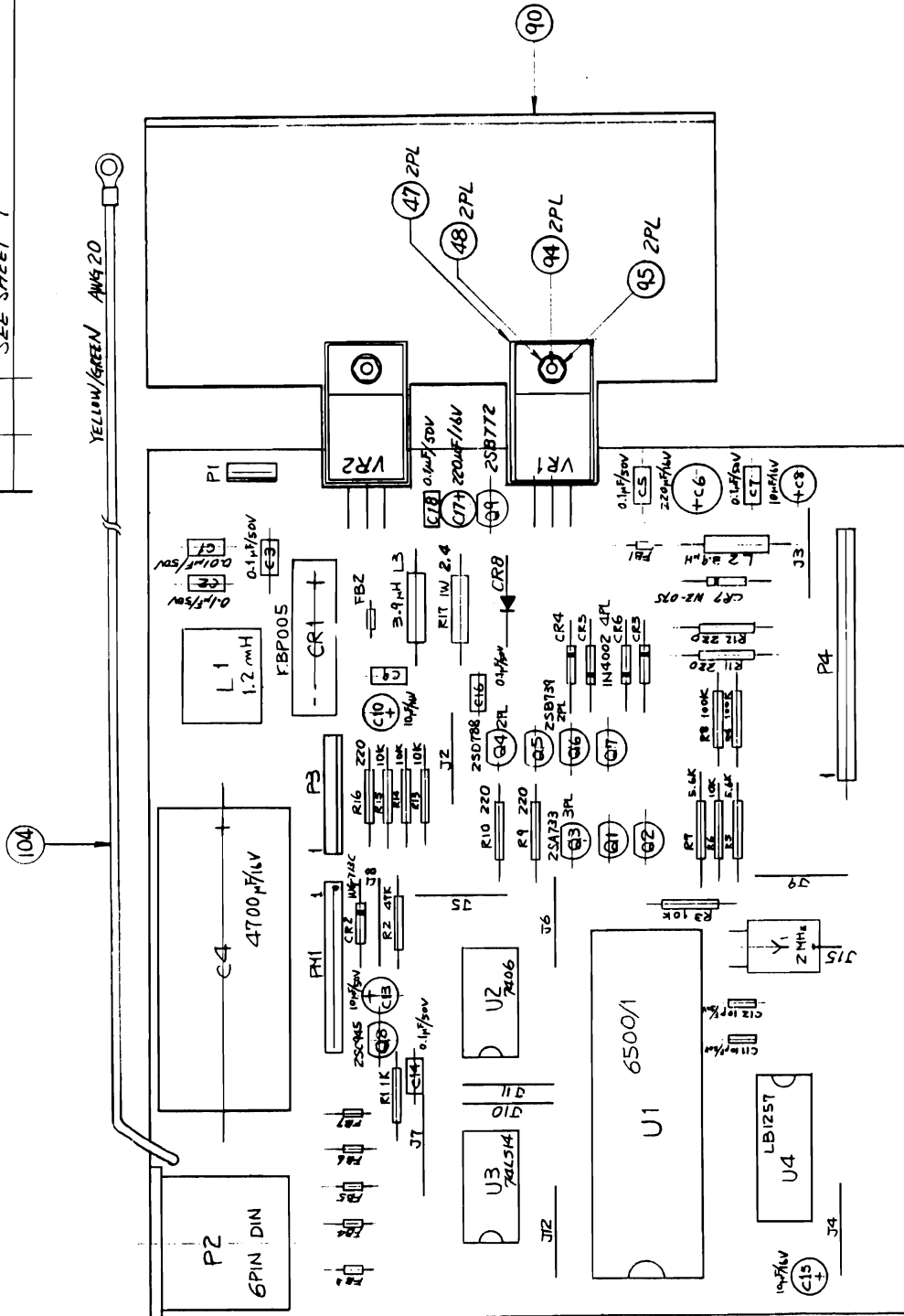
C b m ENGINEERING OSAKA JAPAN	TITLE: PCB ASSY. LOGIC VIC-1520		DATE: 9/19/82	DATE: 9/19/82	DATE: 9/19/82	DATE: 9/19/82	DATE: 9/19/82
	DRAWN BY: 7.75kuch		CHKD: 1.1	APPR: 1.1	SIZE: B	SHEET: 2 OF 6	1520001

QUANTITY REQD PER PART/DASH NO.	ITEM NO	PART NUMBER	DESCRIPTION	REF. DES	BEND	NOTES	DATE		SHEET	
							DATE	SIZE		
	37	B 325557-01	CRYSTAL 2 MHz	Y1		TOYOCOM TQC-201A-8S	1/1	B	3 OF 6	
	38									
	39									
	40									
	41	B 325559-02	CHOKER COIL 1.2 mH 2.0A	L1		TDK UF1817S-122Y2R0-01				
	42	B 325558-02	COIL, INDUCTOR 3.9 μH 0.86A	L2, L3		TDK SP0408-3R9K				
	43	B 325558-01	COIL, INDUCTOR 3.9 μH 0.555A	L3		TDK SP0305-3R9K SUB. FOR ITEM 42.				
	44									
	45									
	46	B 901527-02	VOLTAGE REGULATOR 5V 1A	VRL2		70-220				
	47	B 325551-03	INSULATION SILICONE TO-220							
	48	B 907746-03	NYLON WASHER, 70-220			TO BE ATTACHED WITH ITEM 46				
	49									
	50									
	51	B 904150-06	SOCKET IC LOW PRO. 40PIN	U1						
	52									
	53									
	54									
	55	B 903361-01	CONNECTOR, DIN 6PIN	P2		HOSHIDENKI TCS4460-01-101				
	56									
	57									
	58									
	59	B 325524-02	HEADER ASSY 2PIN	P1		MOLEX 5045-02A				
	60	B 325524-06	HEADER ASSY 6PIN	P3		MOLEX 5045-06A				
	61	B 325562-13	HEADER ASSY 13PIN	P4		MOLEX 3022-13A				
	62									
	63									
	64									
	65	B 900101-32	CAP. ELECTROLYTIC 4700 μF/16V	C4						
	66	B 900301-12	ELECTROLYTIC 220 μF/16V	C6, 17						
	67	B 900100-25	ELECTROLYTIC 10 μF/16V	C8, C10, C15						
	68	B 900303-03	CERAMIC 10PF/50V	C11, C12						
	69	B 900010-38	CERAMIC 0.01 μF/50V	C1						
	70	B 900010-20	CAP. CERAMIC 0.1 μF/50V	C2, 3, 5, 7, 9, 11, 16, 18						
	71	B 900108-56	CAP. ELECT. LOW LEAKAGE 10 μF/50V	C13						
	72									
TITLE: PCB ASSY. LOGIC VIC-1520							DATE: 9/9/83	APPR: A. Takahashi	9/30/83	
c b m ENGINEERING OSAKA JAPAN							DRAWN BY: T. Takahashi	CHKD: / /		

QUANTITY REQD PER PART / DASH NO.	REV	PART NUMBER	DESCRIPTION	REF. DES	BEND	NOTES	DRAWN BY:		DATE		DATE	SIZE	SHEET	
							CHKD:	DATE	DATE	DATE	DATE	DATE	DATE	
5	72	B	RESISTOR CARBON 1/4W 5% 220Ω	R2-R12.R16										
1	74	B	1KΩ	R1										
2	75	B	5.6KΩ	R5.R7										
5	76	B	10KΩ	R3.6.13-15										
1	77	B	47KΩ	R2										
2	78	B	RESISTOR CARBON 1/4W 5% 100KΩ	R4.R8										
	79													
	80													
1	81	B	RESISTOR METAL OXIDE 1W 5% 2.4Ω	R17										
	82													
	83													
1	84	B	RESISTOR PACK 1/8W 1KΩ	RM1		8 ELEMENTS SINGLE-COM.								
	85													
7	87	B	FERRITE BEAD	FB1-FB7										
	88													
1	90	B	HEAT SINK											
	91													
	92													
2	94	B	SCREW PAN HEAD M2.6 X 8 LG											
2	95	B	NUT HEX. M2.6											
	96													
	97													
11	98	B	JUMPER WIRE 12.7 X 6 X 0.6 DIA											
1	99	B	JUMPER WIRE 6 x 6 x 0.6	J15										
	100													
	101													
	102													
	103													
1	104	B	GROUND CABLE ASST. YELLOW/GREEN											
	105													
	106													
	107													
	108													
TITLE:							DRAWN BY:		DATE		DATE		SHEET	
c b m ENGINEERING OSAKA JAPAN							7.7.6.6.6		9/9/82		1/1		1520001	
PCB ASSY. LOGIC VIC-1520							CHKD:		1/1		9/30/82		4 of 6	
							APPR: A. Fukuda				B			
											1015 AWG 20 L=230mm			

REVISIONS

LTR	ZONE	DESCRIPTION	DATE	APPROVED
		SEE SHEET 1	10/1/82	NT

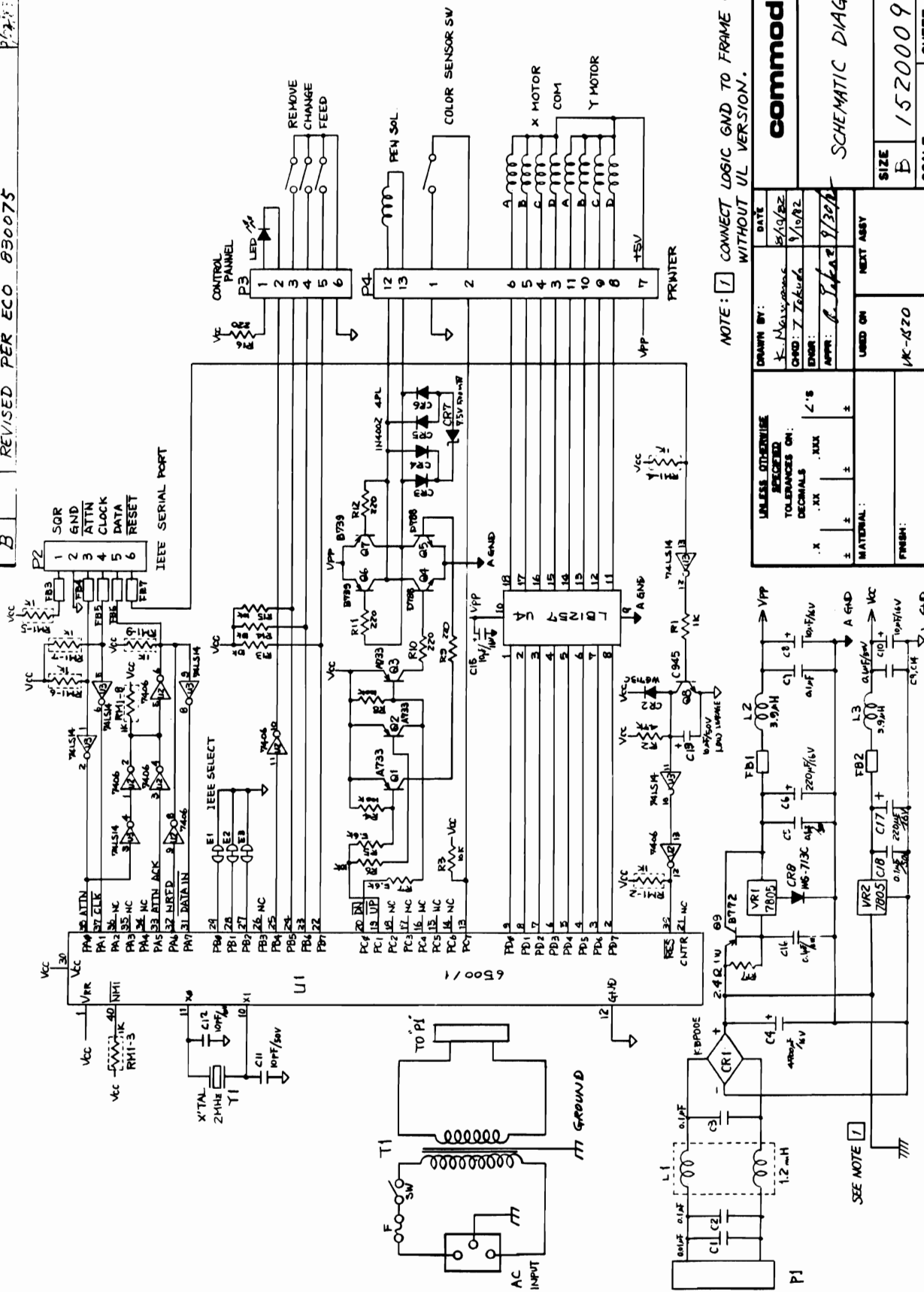


- 01 SHOWN

UNLESS OTHERWISE SPECIFIED TOLERANCES ON: DIMENSIONS: .XX .XXX .XXX MATERIAL:	DRAWN BY: Z. Takum4 DATE: 06/1/82 CHKD: ENGR: APPR: A. Takase 9/30/82	USED ON: VIC 1520 FCC	NEXT ASSY:
	C b m OSAKA JAPAN	SIZE: B SCALE: NONE	REV: F SHEET 5 OF 6
	PCB ASSY LOGIC (FCC) VIC-1520		

REVISIONS

LTR ZONE	DESCRIPTION	DATE	APPROVED
A	PRODUCTION RELEASE	10/1/82	[Signature]
B	REVISED PER ECO 050075	10/1/82	[Signature]



NOTE: 1 CONNECT LOGIC GND TO FRAME GND WITHOUT UL VERSION.

DATE	DATE
8/10/82	8/10/82
9/10/82	9/10/82

DRAWN BY: K. McLaughlin
 CHECKED BY: J. T. [Signature]
 APPR: R. [Signature] 8/20/82

UNLESS OTHERWISE SPECIFIED TOLERANCES ON:
 DECIMALS .XX .XX .XX .XX
 MATERIAL: NEXT ASSY: 1K-1520

SCALE: B 1520009 SHEET 1 OF 1

commodore

SCHEMATIC DIAGRAM

REV	SCALE	SHEET	OF
B	B	1520009	1